

# Latin America

Physical and Political  
Features

# Physical Features:

Atlantic Ocean  
Pacific Ocean  
Panama Canal  
Gulf of Mexico  
Caribbean Sea  
Amazon River  
Andes Mts  
Sierra Madre Mts  
Atacama Desert





# GULF OF MEXICO

## USA

## MEXICO

## CUBA

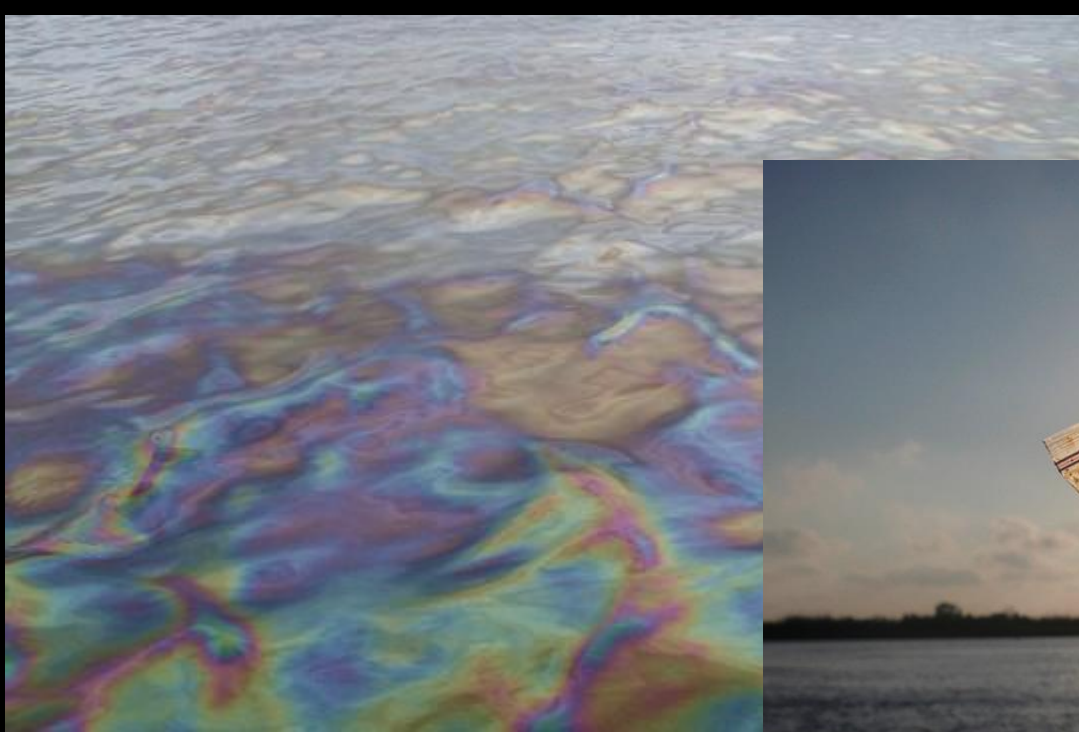
### CIUDAD DE MEXICO (MEXICO CITY)

### CARIBBEAN SEA

500 km

# U.S. Coastal Waters Affected by the Gulf Oil Spill



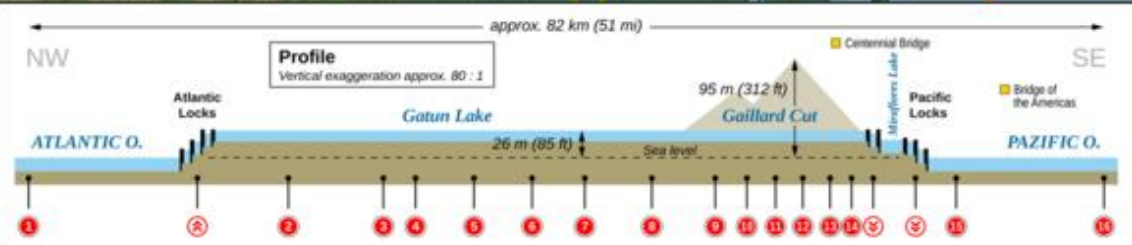
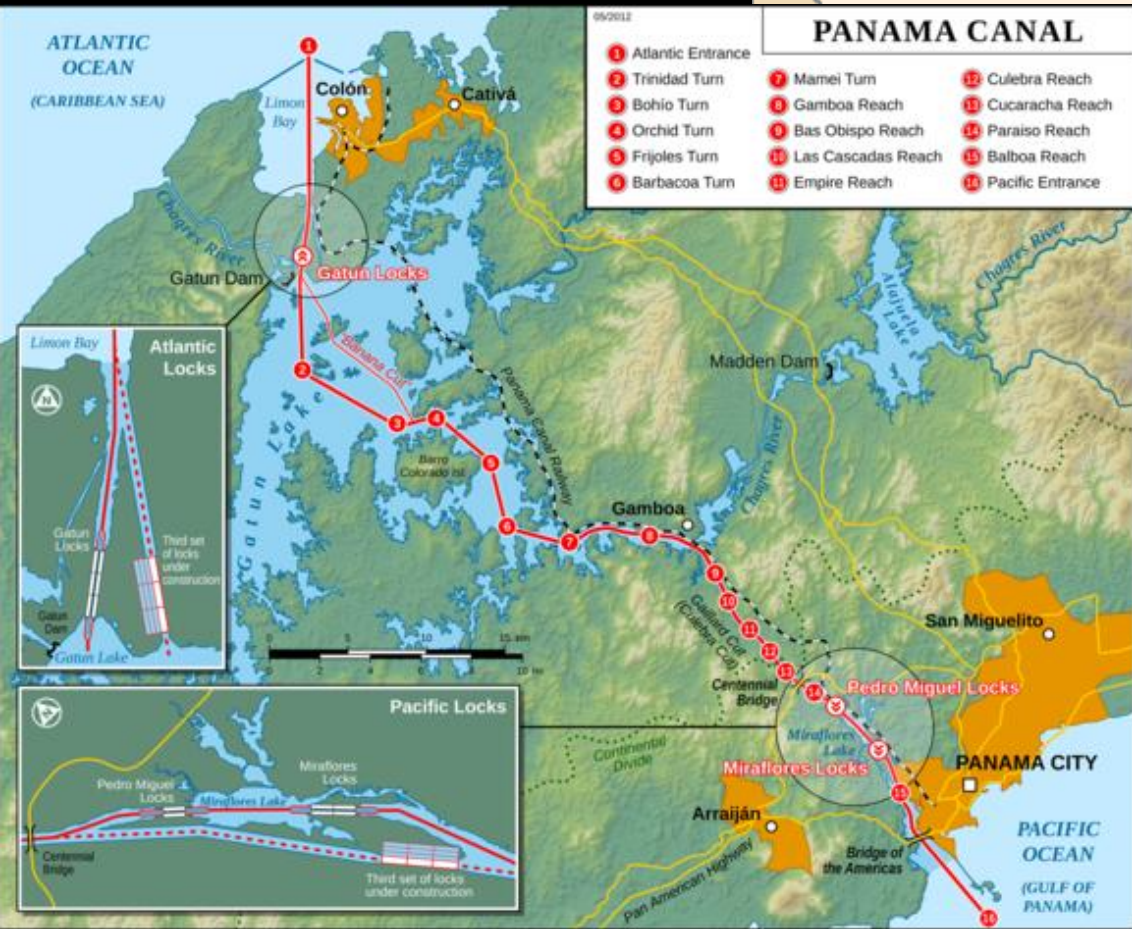


# Caribbean Sea

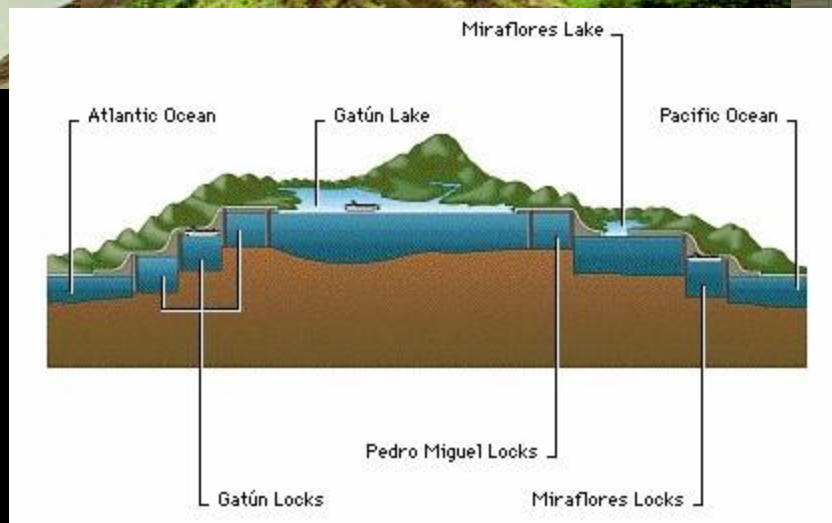


# Panama Canal Amazon River













# Sierra Madre Mountains

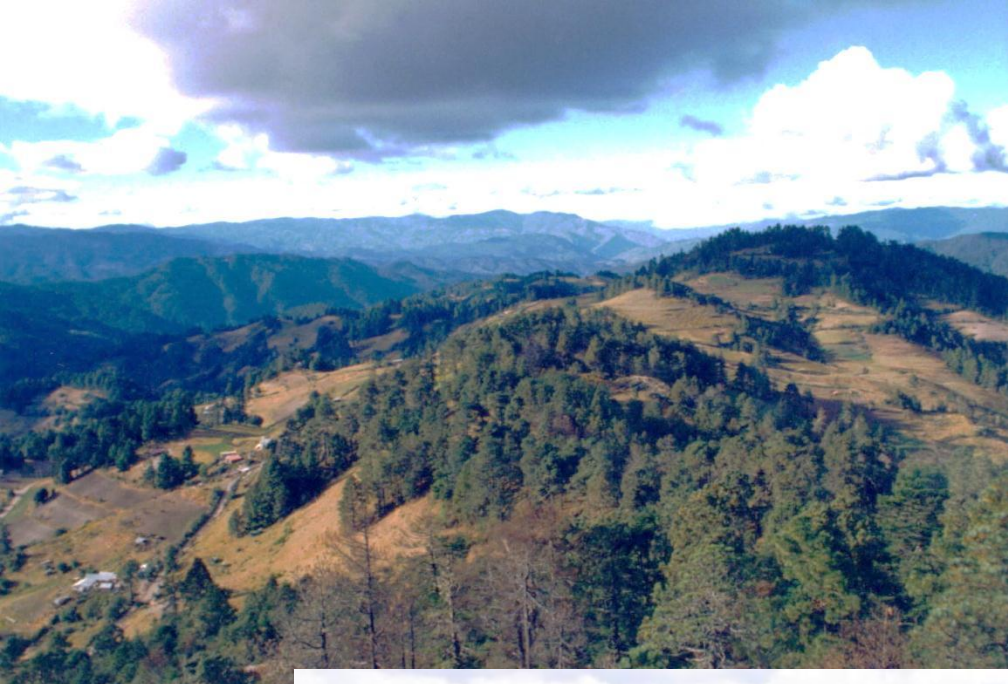




ELEVATION	
metres	feet
3,000	9,843
2,000	6,562
1,000	3,281
500	1,640
200	656
0	0

- International boundaries
- State boundaries
- Intermittent rivers
- Dams
- ▲ Spot elevations in metres

© 1994 Encyclopaedia Britannica, Inc. 100°



# SOUTH AMERICA

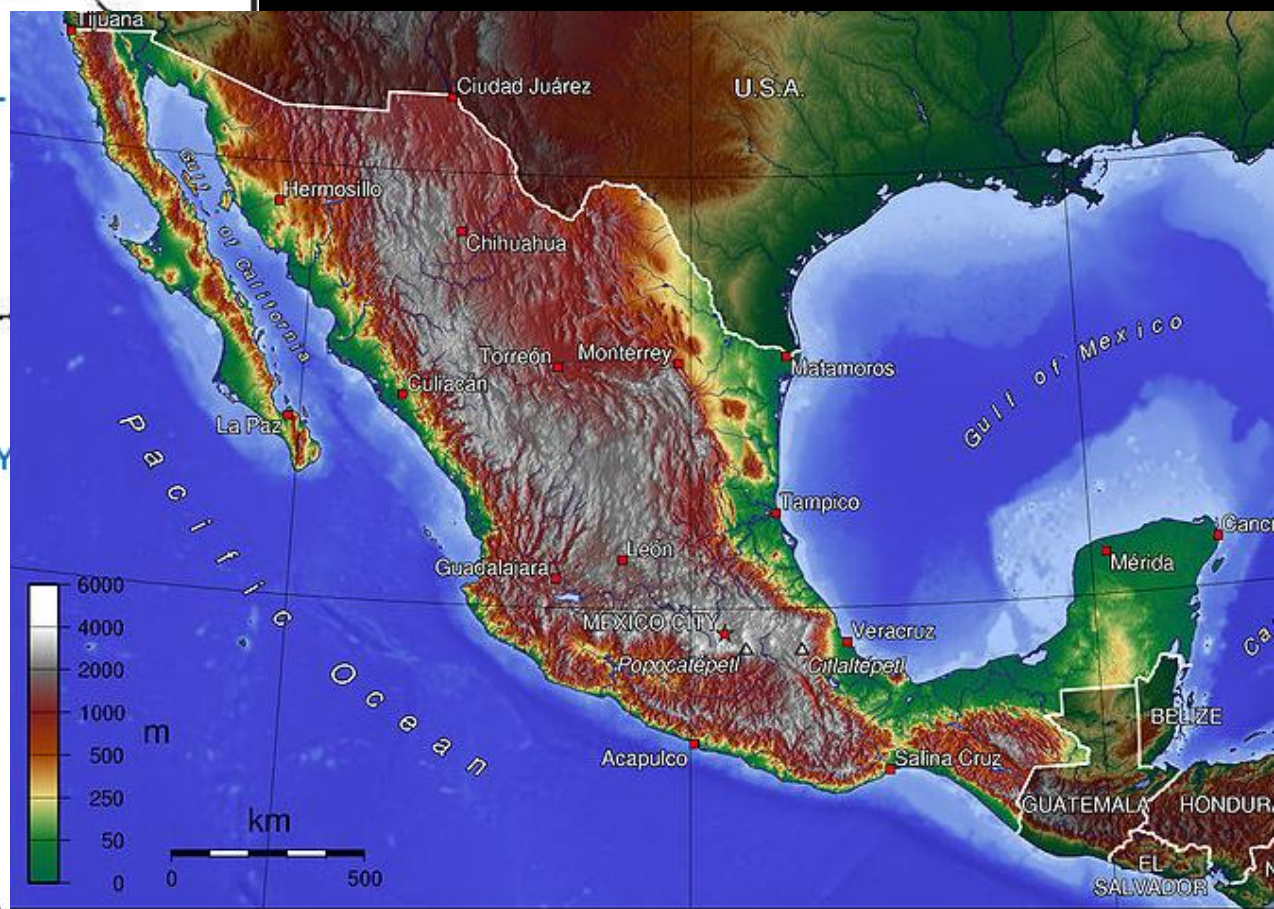
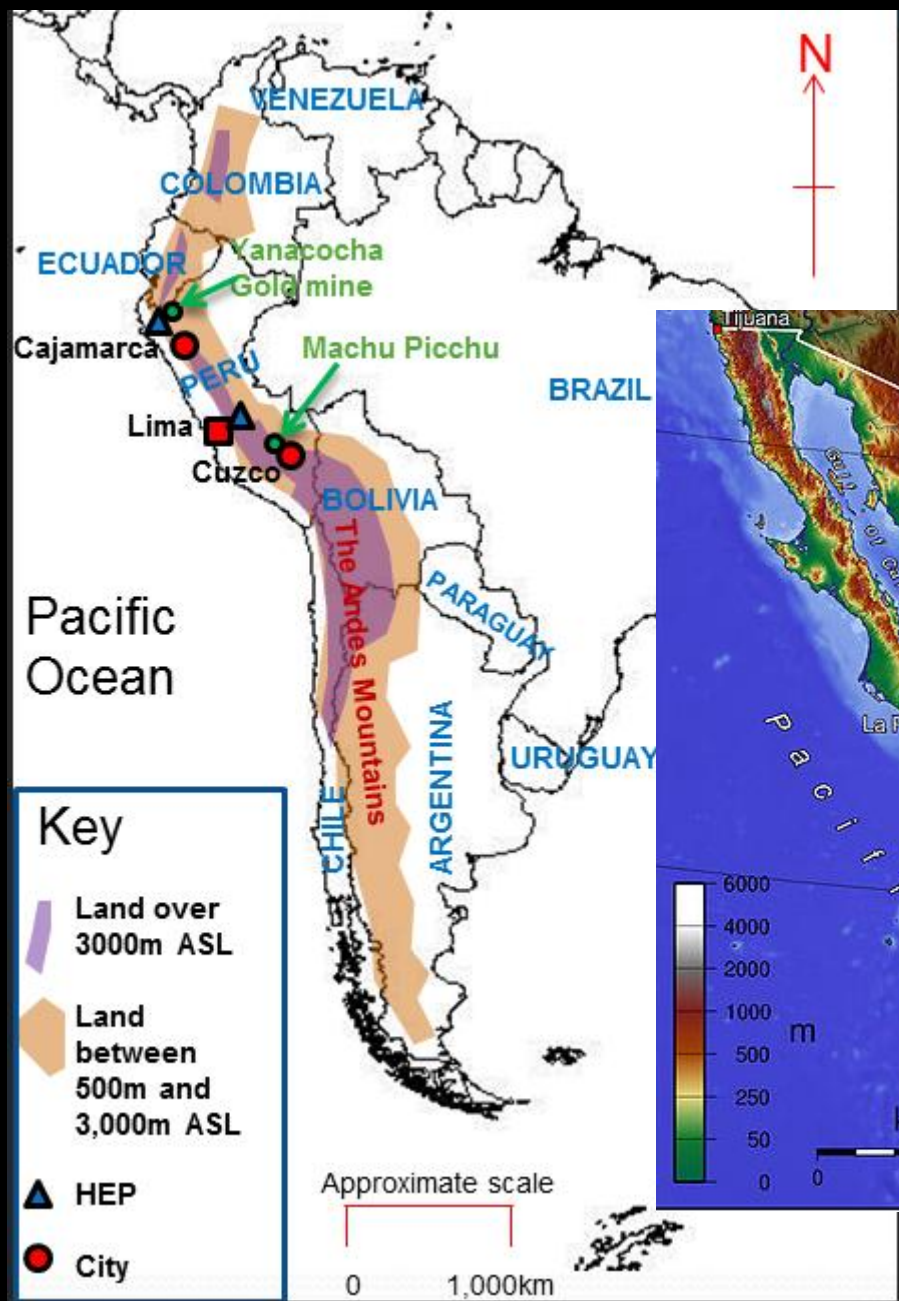


# Andes Mountains













Some places in the Atacama Desert have not had rainfall for over 400 years.





**Atacama Desert  
(Rain Shadow)**

**Prevailing  
Winds**

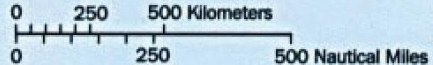
**Andes Mountain Chain**

**Prevailing  
Winds**

**Patagonia  
(Rain Shadow)**

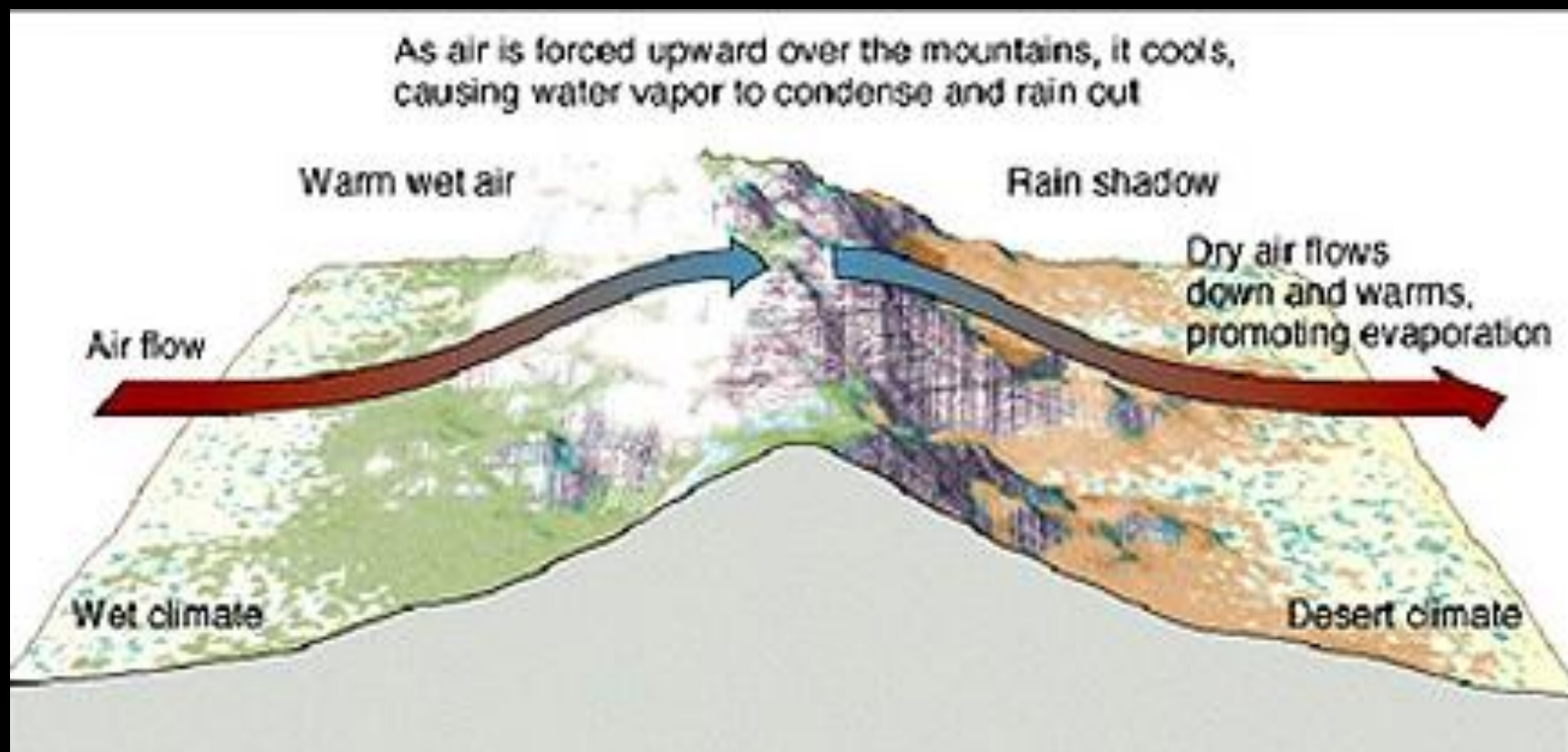
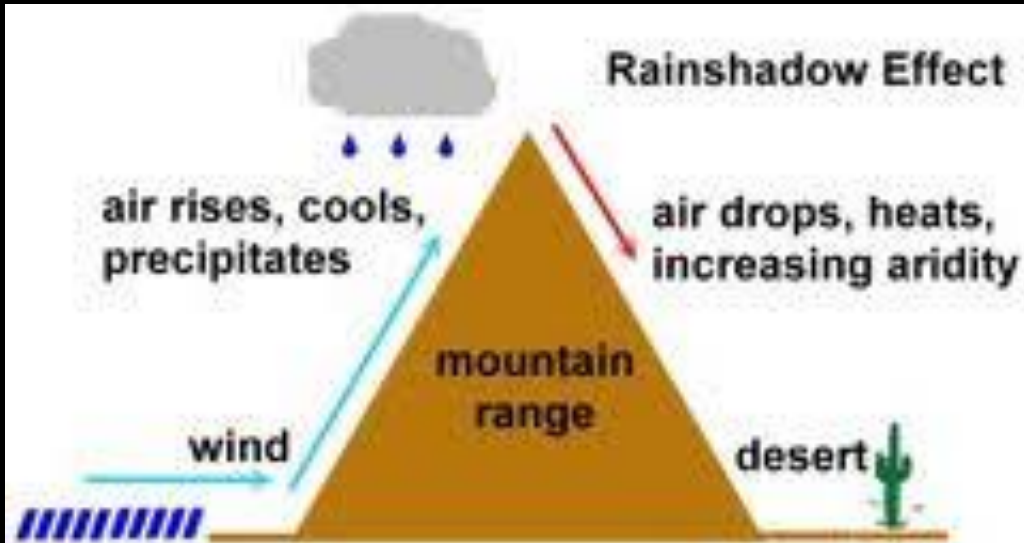
Scale 1:35,000,000

Azimuthal Equal-Area Projection



Boundary representation is not necessarily authoritative.

Stanley  
Falkland Islands  
(Islas Malvinas)  
(administered by U.K.,  
claimed by Argentina)



# Political Features:

Bolivia  
Brazil  
Colombia  
Cuba  
Haiti  
Mexico  
Panama  
Venezuela





Bolivia - the poorest nation in South America





Amazon River

Amazon Rainforest

★ Brasilia

Pantanal

Sao Paulo

Cataratas do Iguazú

North Atlantic Ocean

Salvador

Rio de Janeiro

South Atlantic Ocean

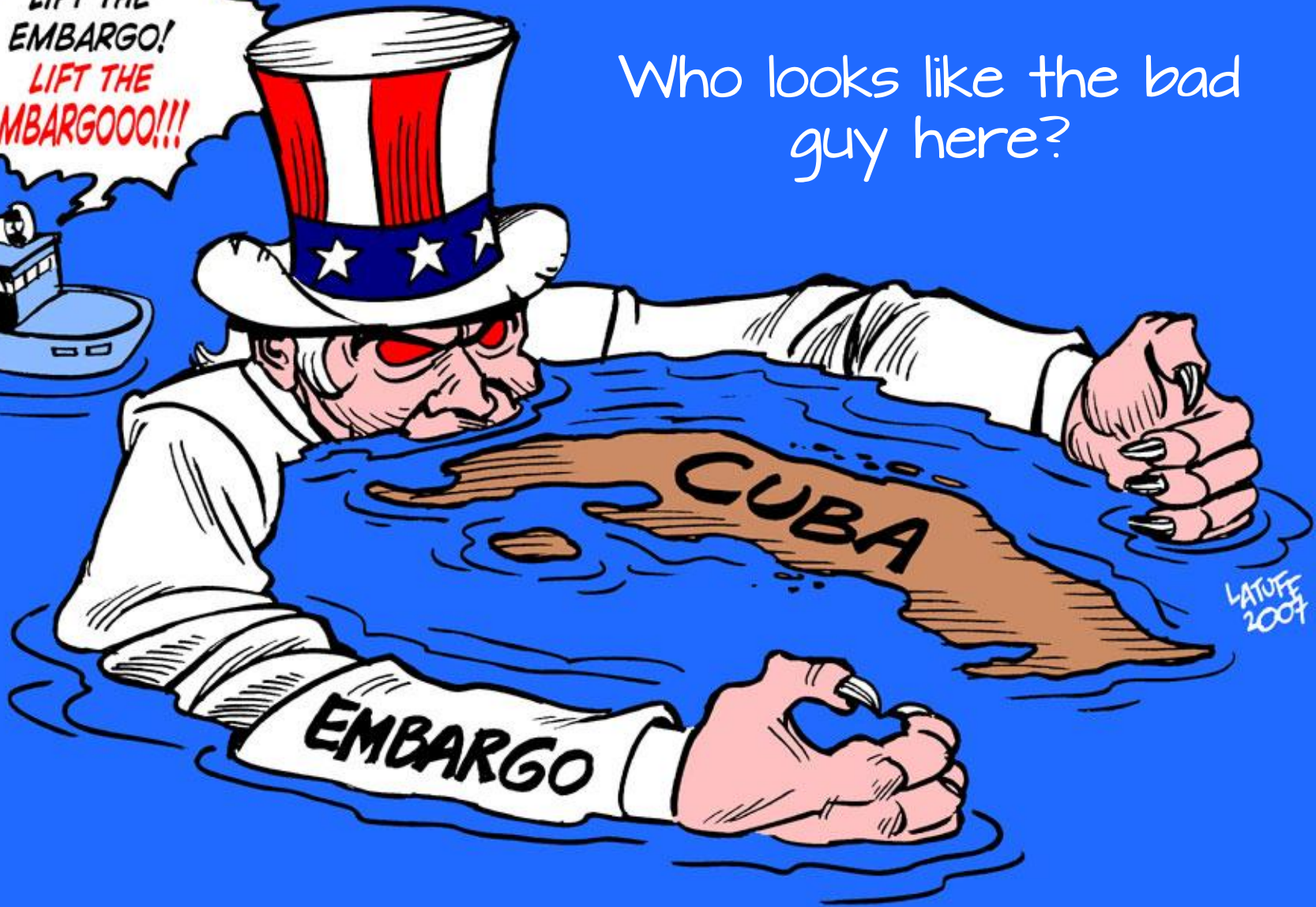
Brazil

Colombia has coasts on both the Pacific and Caribbean.



LIFT THE  
EMBARGO!  
LIFT THE  
EMBARGOOO!!!

Who looks like the bad  
guy here?



LATOFF  
2007



Haiti and the Dominican Republic are both found on the island of Hispaniola. Haiti is one of the poorest countries in the world, though "poorest" can be defined in different ways.



Mexico





# Caribbean Sea

MADREN DAM BACKS UP AUXILIARY WATER TO OPERATE CANAL

MIRAFLORES LOCKS AND SWINGING BRIDGE ON PACIFIC END OF THE PANAMA CANAL

TROUT FISHING & HUNTING IN COOL CHIRIQUI HIGHLANDS

RAINY SEASON - 9 MONTHS (TWICE AS MUCH ON THIS SIDE)

STARRICA

SUGAR CANE

CHIRIQUI LAGOON

MOSQUITO GULF

COLUMBUS SAILED SOUTH ON 4TH VOYAGE, 1502

FASCINATING RUINS OF FORT SAN LORENZO FAMOUS IN IBERIAN HISTORY

PORTOBELLO - "CAMINO REAL" - 17TH CENTURY MILITARY & TREASURE ROAD FROM COLON TO PANAMA

NOMBRE DE DIOS

LOJESCA, EL SINO, SAN LORENZO

365 SAN BLAS ISLANDS WITH PRIMITIVE INDIAN SOCIETY - COCONUTS CHIEF CROOK

BASTIDAS' ROUTE, FIRST DISCOVERER OF PANAMA IN 1501

EL VOLCAN ERUPTION LAGOON

OH, THAT PANAMA COFFEE!

UHM, THAT PANAMA RUM!

YOUR PANAMA HATS ARE HARD TO COLLAR BUT WE HAVE NICE ONES, TOO

GOOD HUNTING

TOURIST RESORT

TABOGA ISLAND

DELICIOUS NATIVE FRUITS, LIKE MANGOES

DALE, VIVA EL TORO Y EL TOREADOR!

BALBOA DISCOVERED PACIFIC OCEAN, 1513

BALBOA REVEALED WEST AT ACCL, 1519

YES, WE HAVE CITY OF BANANAS

DAVID

GREAT CATTLE COUNTRY

LOST SPANISH GOLD MINES

PACIFIC COAST

BOATING IS FUN!

PEARL ISLANDS

IGUANA IS GOOD EATING

BALBOA'S FIRST ROAD - ACROSS Isthmus

BALBOA TRANSPORTED "PIG" OVER THIS ROUTE

DARIEN NATIVES STILL RESIST THE INTRUSION OF "CIVILIZATION"

FOLLERA & MONTUÑO FAMOUS NATIONAL DRESS

THE HOLLOW LOG CATUCHO NOW USES A MOTOR!

SAN FRANCISCO

SANTA FE

WONDERFUL BEACHES

WORLD CHAMPION FISHING IN PANAMA BAY

BOATING IS FUN!

PEARL ISLANDS

BALBOA TRANSPORTED "PIG" OVER THIS ROUTE

DARIEN NATIVES STILL RESIST THE INTRUSION OF "CIVILIZATION"

OLD SPANISH GOLD MINES

EXOTIC COLORFUL BIRDS

## PANAMA - LAND OF CONTRASTS

Fascinating in its contrasts of scenery, people and customs, Panama observed its 50th anniversary as an independent republic on Nov. 3, 1903. Its 601,000 people, of happy temperament and varying color, established its swash-buckling capital on the inland "pie-dra" under thatched country roof.

The majority of citizens speak Spanish, but a large number are bilingual, handling English fluently, and some Indian tribes still maintain their own languages. The people have a strong Catholic religious tradition, but are markedly liberal in granting freedom of worship, except to such extremes as an occasional "healer" or witchcraft doctor, who may appear from time to time.

Panama's most common paradox is that the sun rises in the Pacific and sets in the Atlantic. With its capital only 9 degrees North of the Equator and a mean annual temperature of 85.3 degrees, Panama's weather is distinguished by heavy rain and brilliant sunshine, and the nights are surprisingly cool to visitors expecting the torrid steaming tropics. The rainfall varies from 78 inches yearly on the Pacific watershed of the Continental Divide, to 100 inches on the Atlantic side. Good housewives always keep a basket hanging in the dry closets and a bottle of anti-mold liquid handy.

The Bay of Panama is famous as a deep-sea fishing grounds with huge black marlin, sailfish and tuna, as well as grouper and snappers. The annual ocean tide in the Pacific is 12.8 feet and in the Atlantic 0.8 feet.

One of the first countries settled by the Spanish, Panama still has only 16.4% of its land under cultivation, and enough unexplored territory to satisfy the most adventurous person. The ruins of its former pirate capital, 168 years old when the pirate Morgan laid it waste in 1671, bear eloquent testimony to the initiative and drive of those early conquistadores.

The orderly, regimented life in the Canal Zone, administered by the United States government, presents a marked contrast to the varied life across the narrow border between those who Bay in the Republic. The Canal itself, 50 miles from deep-water Atlantic to Pacific, is rightly one of the engineering marvels of the world - a costly, meticulously planned and in excellent condition these many years after its opening in 1914.

For more contrasts, come visit Panama and enjoy learning them at firsthand!



# Pacific Ocean

# MAP OF REPUBLIC OF PANAMA AND CANAL ZONE

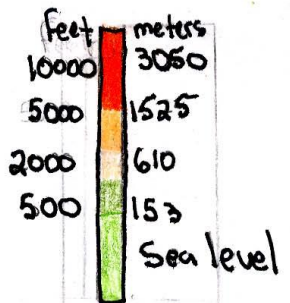
Map of Panama and Canal Zone logo

# Physical map



key

- Bodies of water
- ★ Deserts
- ▲ mountains



Temperature: Average temp 26 and 28°C

Elevation: 0 to 500 feet above level

